

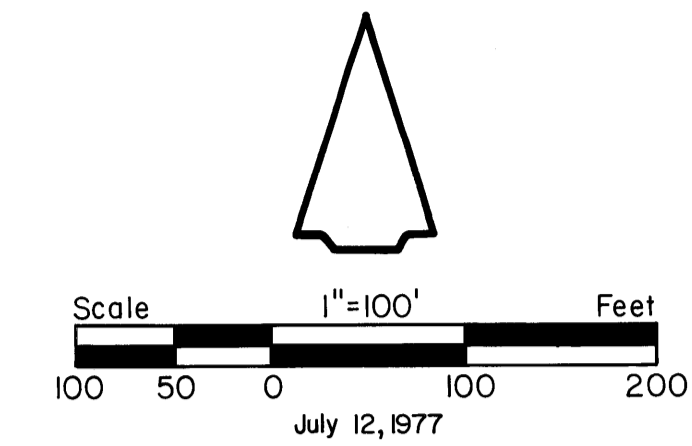
# PHASE ONE, MID-RIVERS YACHT AND COUNTRY CLUB

Lying In  
Sections 1,2,&3 , Township 38 South, Range 40 East  
Martin County, Florida

I, LOUISE V. ISAACS, CLERK OF THE CIRCUIT COURT OF MARTIN COUNTY, FLORIDA, HEREBY CERTIFY THAT THIS PLAT WAS FILED FOR RECORD IN PLAT BOOK 7, PAGE 23, MARTIN COUNTY FLORIDA, PUBLIC RECORDS, THIS DAY OF July 12, 1977

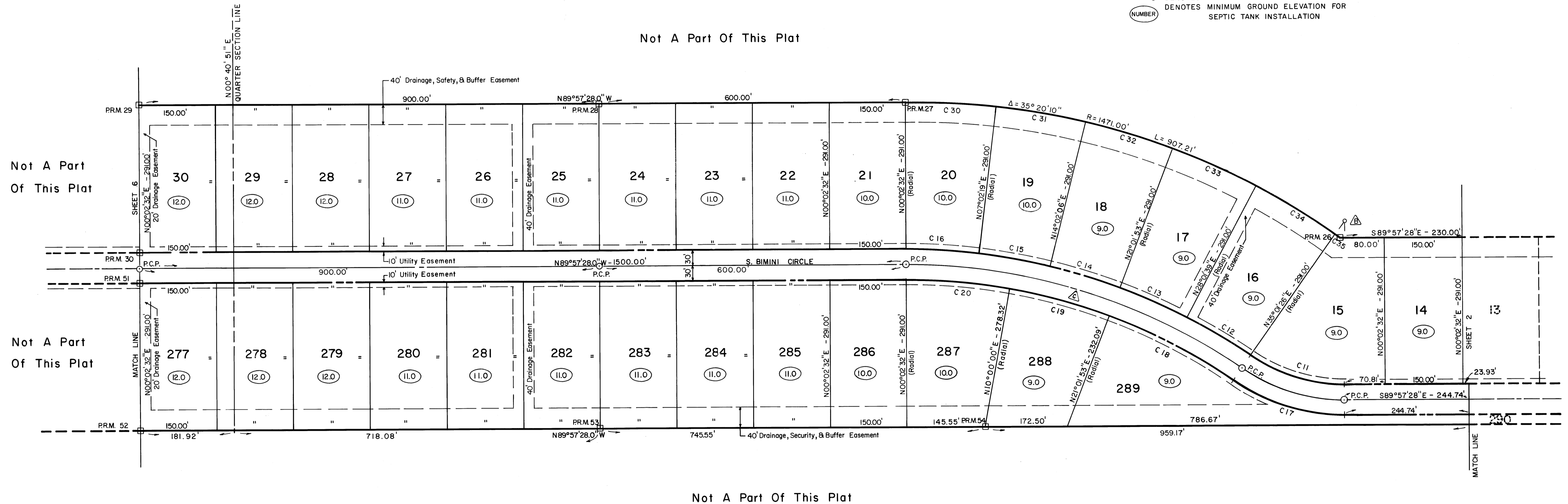
LOUISE V. ISAACS, CLERK  
CIRCUIT COURT  
MARTIN COUNTY, FLORIDA  
FILE NO. \_\_\_\_\_  
BY: \_\_\_\_\_ DEPUTY CLERK

NORTH



- LEGEND:
- DENOTES PERMANENT REFERENCE MONUMENT
  - DENOTES PERMANENT CONTROL POINT
  - (NUMBER) DENOTES MINIMUM GROUND ELEVATION FOR SEPTIC TANK INSTALLATION

Not A Part Of This Plat



Not A Part Of This Plat

Curve	Radius	Delta	Arc	Tangent	Chord	Chord Bearing
C11	320.00'	34° 58' 54"	195.37'	100.84'	192.35'	S 72° 28' 01" E
C12	1180.00'	06° 59' 47"	144.09'	72.13'	144.00'	S 58° 28' 27" E
C13	1180.00'	06° 59' 47"	144.09'	72.13'	144.00'	S 65° 28' 14" E
C14	1180.00'	06° 59' 47"	144.09'	72.13'	144.00'	S 72° 28' 01" E
C15	1180.00'	06° 59' 47"	144.09'	72.13'	144.00'	S 79° 27' 48" E
C16	1180.00'	06° 59' 47"	144.09'	72.13'	144.00'	S 86° 27' 35" E
C17	380.00'	34° 58' 54"	232.00'	119.75'	228.42'	S 72° 28' 01" E
C18	1120.00'	13° 59' 34"	273.52'	137.45'	272.85'	S 61° 58' 20" E
C19	1120.00'	11° 01' 53"	215.64'	108.15'	215.30'	S 74° 29' 04" E
C20	1120.00'	09° 57' 28"	194.65'	97.57'	194.41'	S 84° 58' 44" E
C30	1471.00'	06° 59' 47"	179.63'	89.92'	179.51'	S 86° 27' 35" E
C31	1471.00'	06° 59' 47"	179.63'	89.92'	179.51'	S 79° 27' 48" E
C32	1471.00'	06° 59' 47"	179.63'	89.92'	179.51'	S 72° 28' 01" E
C33	1471.00'	06° 59' 47"	179.63'	89.92'	179.51'	S 65° 28' 14" E
C34	1471.00'	06° 59' 47"	179.63'	89.92'	179.51'	S 58° 28' 27" E
C35	1471.00'	00° 21' 16"	9.10'	4.55'	9.10'	S 54° 47' 56" E
△	320.00'	34° 58' 54"	213.69'	110.29'	210.39'	S 72° 28' 01" E
△	1150.00'	34° 58' 54"	702.13'	362.39'	691.27'	S 72° 28' 01" E